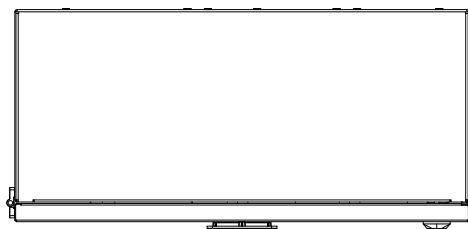
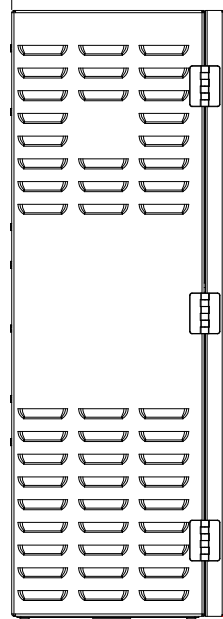


FRONT VIEW

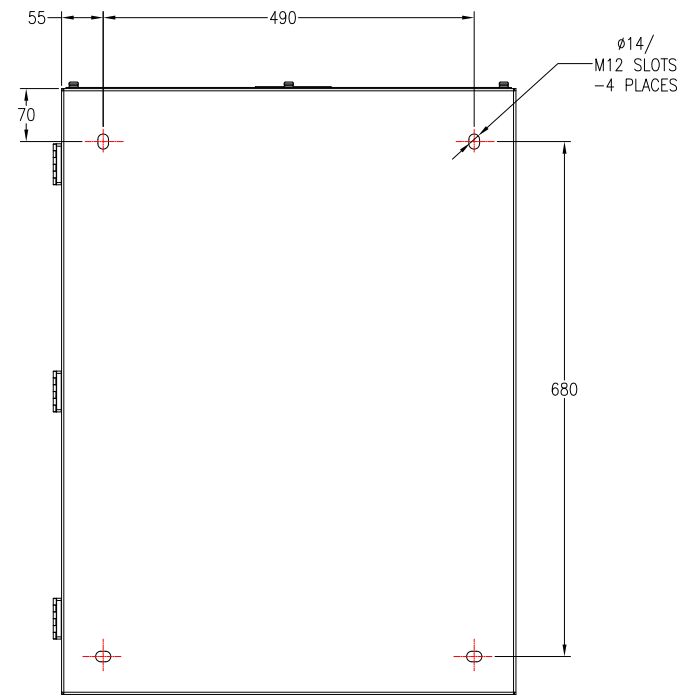


TOP VIEW



LEFT SIDE VIEW

550
MINIMUM CLEARANCE
RECOMMENDED



NOTES:

1. INSTALLATION SHALL COMPLY WITH ALL APPLICABLE NATIONAL, STATE AND LOCAL ELECTRICAL REGULATIONS.
2. PLEASE REFER TO PRODUCT MANUALS FOR ADDITIONAL DETAILS PRIOR TO INSTALLATION AND SITE PREPARATION WORK.
3. ALL DIMENSIONS ARE IN MILLIMETERS.
- △4. CLEARANCE DIMENSIONS RECOMMENDED FOR AIRFLOW AND SERVICE ACCESS ONLY.
CONSULT WITH THE LOCAL SAFETY CODES AND STANDARDS FOR ADDITIONAL REQUIREMENTS IN YOUR AREA.
5. CABLE ENTRY IS THROUGH THE BOTTOM OF UNIT.
6. NET WEIGHT OF THE UNIT IS 48kg.
7. PROTECTION CLASS: IP20.
8. PANEL COLOR: RAL 9003, GLOSS LEVEL 85%.
9. OPERATING TEMPERATURE: 0°C TO 40°C.

THIS DRAWING AND SPECIFICATIONS HEREIN ARE THE PROPERTY OF SCHNEIDER ELECTRIC AND SHALL NOT BE COPIED, REPRODUCED OR USED IN WHOLE OR IN PART, AS THE BASIS FOR THE MANUFACTURE OR SALE OF ITEMS WITHOUT WRITTEN PERMISSION FROM SCHNEIDER ELECTRIC. THIS DRAWING IS BASED UPON LATEST AVAILABLE INFORMATION AND IS SUBJECT TO CHANGE WITHOUT NOTICE.

Schneider Electric

TITLE: GALAXY VS
WALLMOUNT MAINTENANCE BYPASS PANEL
150kW, 3PH, 400V SINGLE UNIT
GENERAL ARRANGEMENT

DWG NO: GVSBPUSU150KH

REV. 1

DRAWN: BALA 20-SEP-22

ENGINEER: ChenLei BAO 20-SEP-22

APPROVED: JiaChen LIN 20-SEP-22

PROJECT: SUBMITTAL DRAWINGS

SHEET 1 OF 4

**FIRST
ANGLE
PROJECTION:**

Technical drawing of the interior of a safe, showing dimensions and component labels. The drawing includes the following labels and dimensions:

- Labels:**
 - HSSiB (Hinged Shelf Support Bracket)
 - HMbB (Hinged Mounting Bracket)
 - HUoB (Hinged Upper Bracket)
 - UIB/SSiB (Upper Interior Bracket/Support)
 - MBB (Middle Bracket)
 - UoB (Upper Bracket)
- Dimensions:**
 - 402 (Total height)
 - 62 (Height of the upper section)
 - 424 (Height of the lower section)

320

CLASS-2 SELV CONTROL
TERMINALS(1-4)

non-CLASS 2/
non-SELV CONTROL
TERMINALS(5-12)

UPS OUTPUT

OUTPUT BREAKER
4 POLE , 250A
INS 250MG
(SCHNEIDER ELECTRIC)
-UOB

MAINTENANCE BYPASS
BREAKER
4 POLE , 250A
INS 250MG
(SCHNEIDER ELECTRIC)
-MBB

FROM UTILITY
INPUT(SINGLE MAINS)/
BYPASS(DUAL MAINS)

TO LOAD

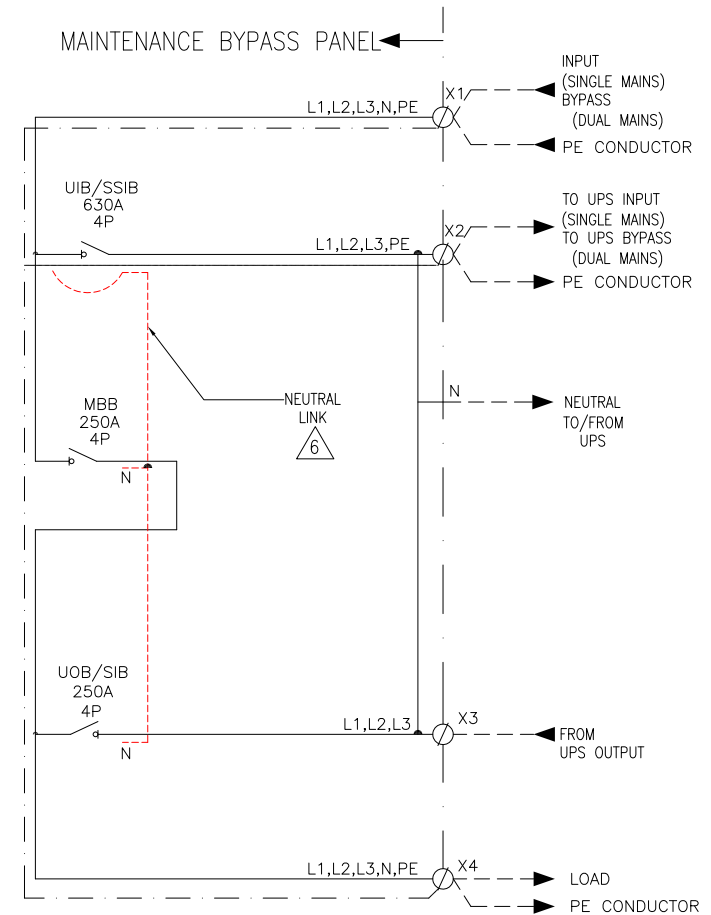
FROM UPS
INPUT
(SINGLE MAINS)/
BYPASS
(DUAL MAINS)

UNIT INPUT(UIB)/
STATIC SWITCH
INPUT(SSIB)
BREAKER
4POLE,630A
INS 630 TETRA
SCHNEIDER ELECTRIC

NEUTRAL JUMPERS
(TO BE REMOVED
IF THIS
IS A LOCAL
REQUIREMENT)

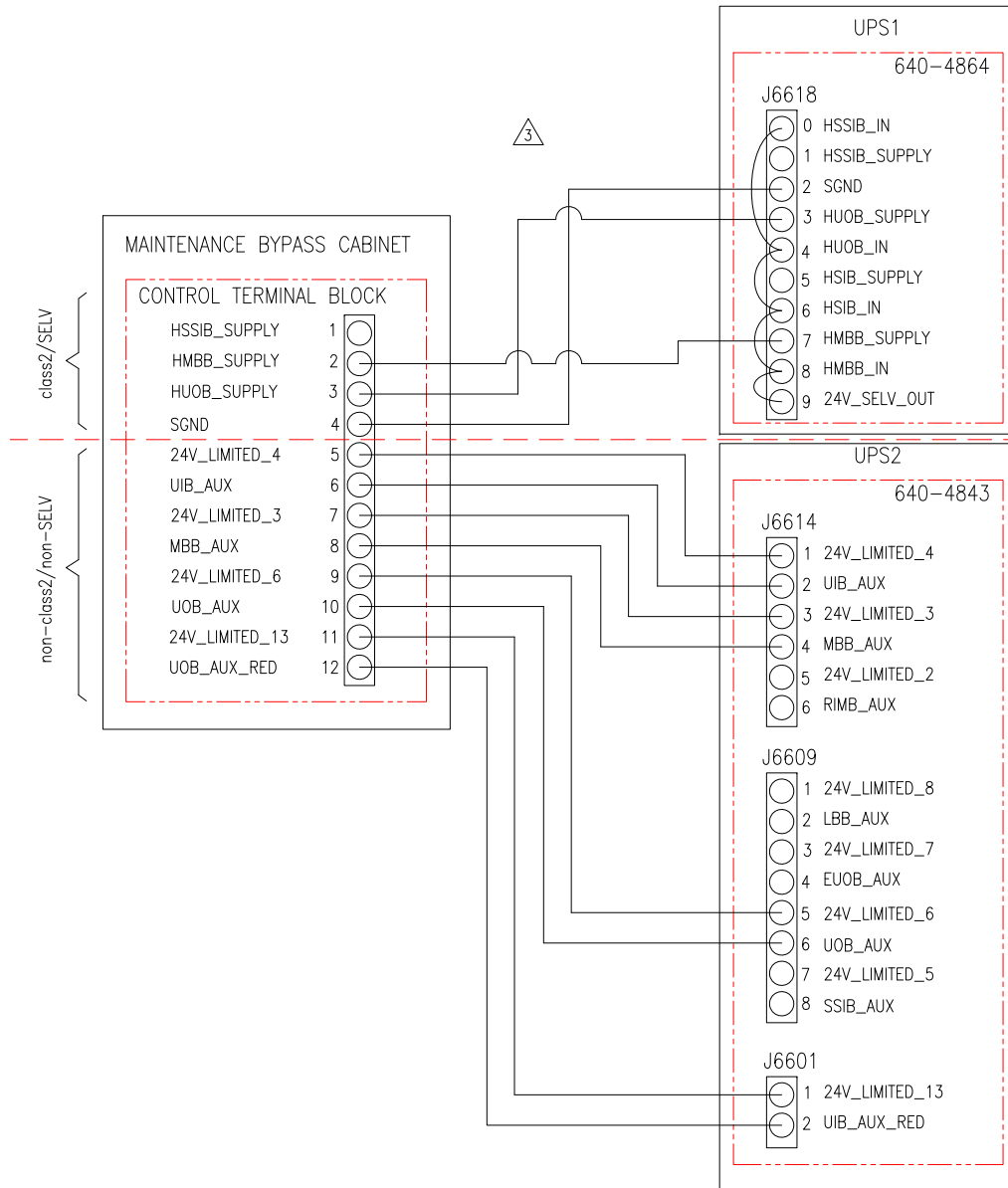
6

POWER CIRCUIT DIAGRAM

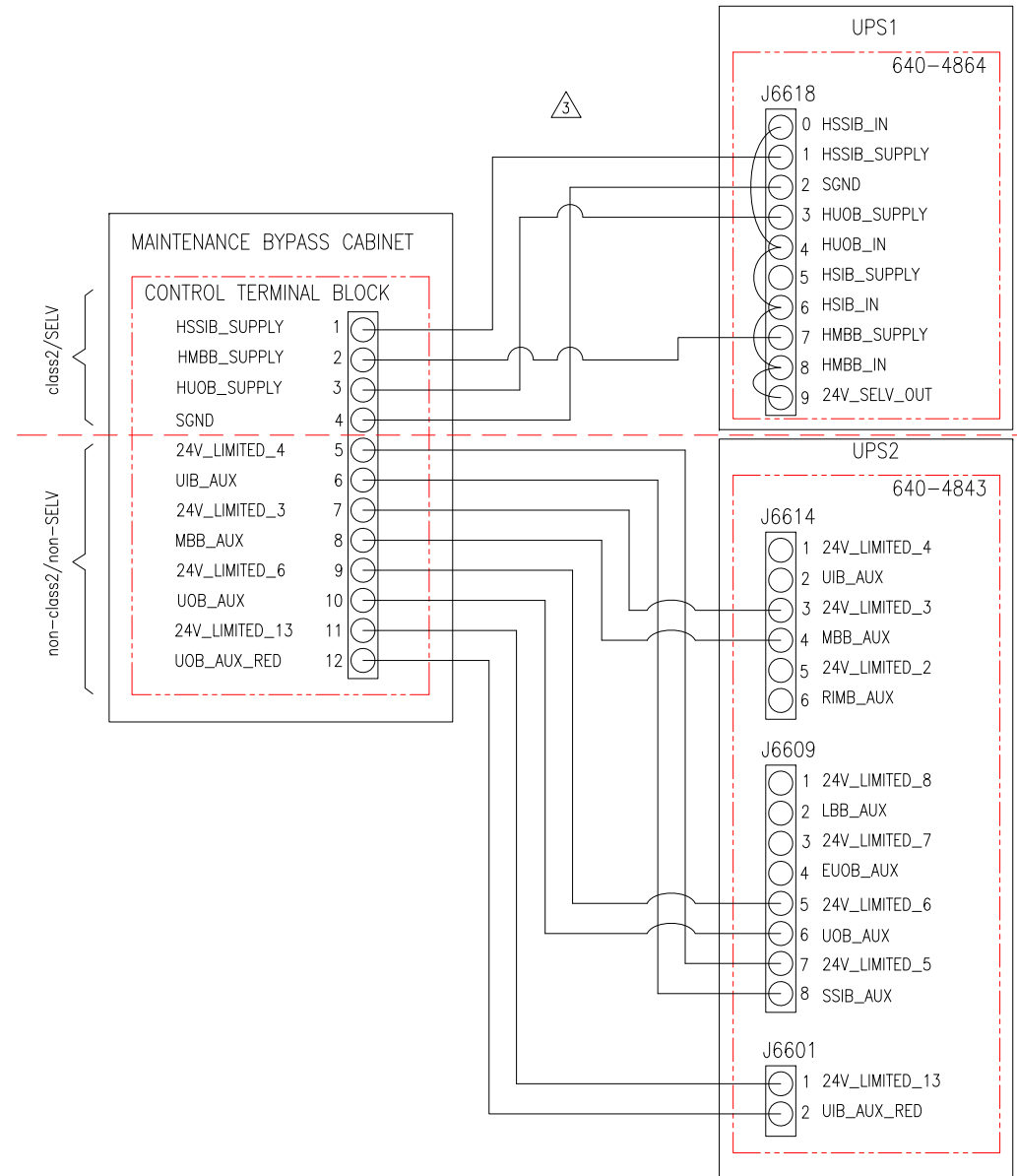


REV. 2
FIRST
ANGLE
PROJECTION:

SINGLE MAINS



DUAL MAINS



- NOTES:**
1. INSTALLATION SHALL COMPLY WITH ALL APPLICABLE NATIONAL, STATE AND LOCAL ELECTRICAL REGULATIONS.
 2. PLEASE REFER TO PRODUCT MANUALS FOR ADDITIONAL DETAILS PRIOR TO INSTALLATION AND SITE PREPARATION WORK.
 - △3. CABLES BETWEEN UPSs AND SYSTEM BYPASS PANEL PROVIDED BY OTHERS.
 4. ROUTE THE SIGNAL CABLES SEPARATELY FROM THE POWER CABLES AND ALSO ROUTE THE CLASS 2/SELV CABLES SEPARATELY FROM THE NON-CLASS 2/NON-SELV CABLES.

THIS DRAWING AND SPECIFICATIONS HEREIN ARE THE PROPERTY OF SCHNEIDER ELECTRIC AND SHALL NOT BE COPIED, REPRODUCED OR USED IN WHOLE OR IN PART, AS THE BASIS FOR THE MANUFACTURE OR SALE OF ITEMS WITHOUT WRITTEN PERMISSION FROM SCHNEIDER ELECTRIC. THIS DRAWING IS BASED UPON LATEST AVAILABLE INFORMATION AND IS SUBJECT TO CHANGE WITHOUT NOTICE.

Schneider Electric

TITLE: GALAXY VS
WALLMOUNT MAINTENANCE BYPASS PANEL
150kW, 3PH, 400V SINGLE UNIT
INTERFACE DETAILS

PROJECT: SUBMITTAL DRAWINGS SHEET 3 OF 4

DWG NO: GVSBPUS150KH

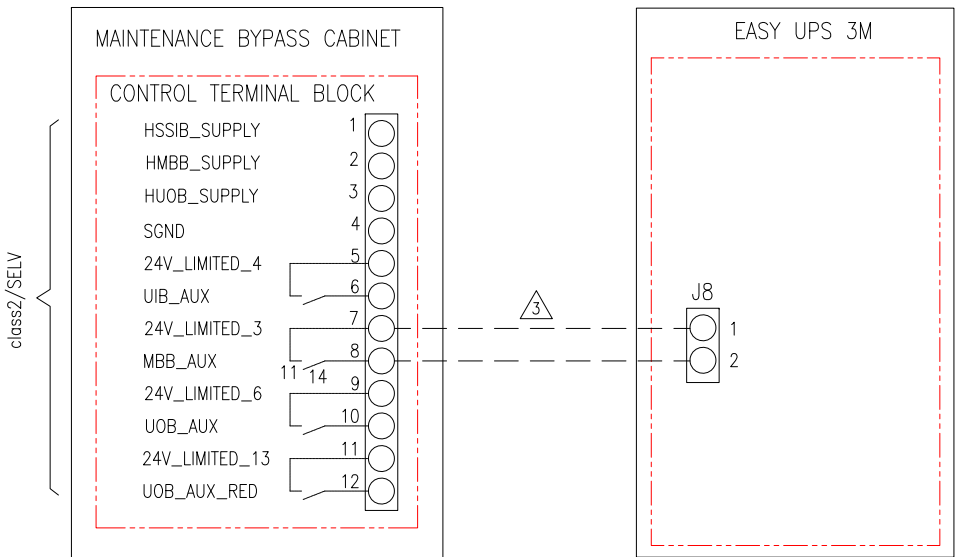
DRAWN: BALA	20-SEP-22
ENGINEER: ChenLei BAO	20-SEP-22
APPROVED: JiaChen LIN	20-SEP-22

REV. 1

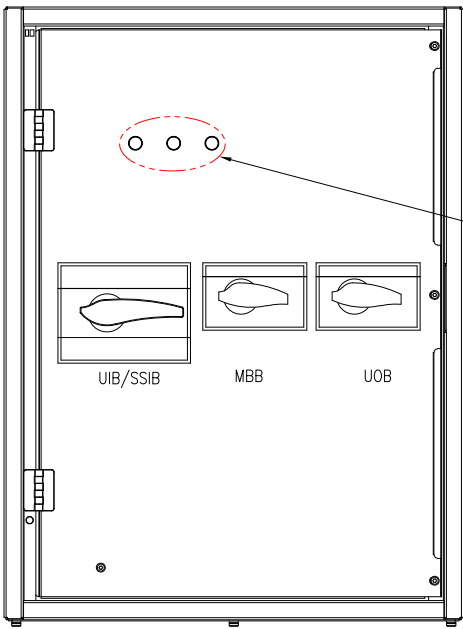
ANGLE OF PROJECTION
N/A

INTERFACE DETAILS FOR GVS BYPASS PANEL TO USE WITH UNITARY EASY 3M UPS 3:3-100kVA/120kVA

INTERFACE DETAILS-SIGNAL CABLES CONNECTION FOR MBC & E3M UPS



REMOVE 3x INDICATOR LAMPS INTERNAL CONNECTIONS AND CHANGE MBC AUX CONTACT CABLING FROM NC TO NO



REMOVE THESE 3x LAMPS & STICKERS & PUT PLUGS WHEN USED FOR EASY 3M UPS (PLUGS NOT PROVIDED)

INTERNAL FRONT VIEW
(FRONT DOOR REMOVED)

- NOTES:
- 1. INSTALLATION SHALL COMPLY WITH ALL APPLICABLE NATIONAL, STATE AND LOCAL ELECTRICAL REGULATIONS.
 - 2. PLEASE REFER TO PRODUCT MANUALS FOR ADDITIONAL DETAILS PRIOR TO INSTALLATION AND SITE PREPARATION WORK.
 - 3. CABLES BETWEEN UPS AND MAINTENANCE BYPASS PANEL ARE PROVIDED BY OTHERS.
 - 4. ROUTE THE SIGNAL CABLES SEPARATELY FROM THE POWER CABLES AND ALSO ROUTE THE CLASS 2/SELV CABLES SEPARATELY FROM THE NON-CLASS 2/NON-SELV CABLES.

THIS DRAWING AND SPECIFICATIONS HEREIN ARE THE PROPERTY OF SCHNEIDER ELECTRIC AND SHALL NOT BE COPIED, REPRODUCED OR USED IN WHOLE OR IN PART, AS THE BASIS FOR THE MANUFACTURE OR SALE OF ITEMS WITHOUT WRITTEN PERMISSION FROM SCHNEIDER ELECTRIC. THIS DRAWING IS BASED UPON LATEST AVAILABLE INFORMATION AND IS SUBJECT TO CHANGE WITHOUT NOTICE.



TITLE: GALAXY VS
WALLMOUNT MAINTENANCE BYPASS PANEL
100/120KW, 3PH, 400V SINGLE UNIT
INTERFACE DETAILS FOR EASY UPS M

DWG NO: GVSbpsu150KH

REV. 0

DRAWN: JAYAPRAKASH

20-SEP-22

ANGLE OF

ENGINEER: Leon DU

20-SEP-22

PROJECTION

APPROVED: HARISH R

20-SEP-22

1

PROJECT: SUBMITTAL DRAWINGS SHEET 4 OF 4